



MERRA  
HOMES

 **RODÉO PALMS**  
ESTATES

Coming  
Fall 2011

*The Sago*

**Starting at \$425,000**

Base Plan Total Living Area  
3,790 Sq. Ft.



Office (713) 600-3550  
[www.mcvaugh.com](http://www.mcvaugh.com)

Merra Homes reserves the right to change floor plans, exteriors, specifications, prices, and terms at any time. All floor plans and renderings are artist's conception and are not intended to be an exact representation. Square footage, finishes and dimensions shown are approximate. Architectural styles and design may vary dramatically between elevations. Consult your sales executive for additional information.

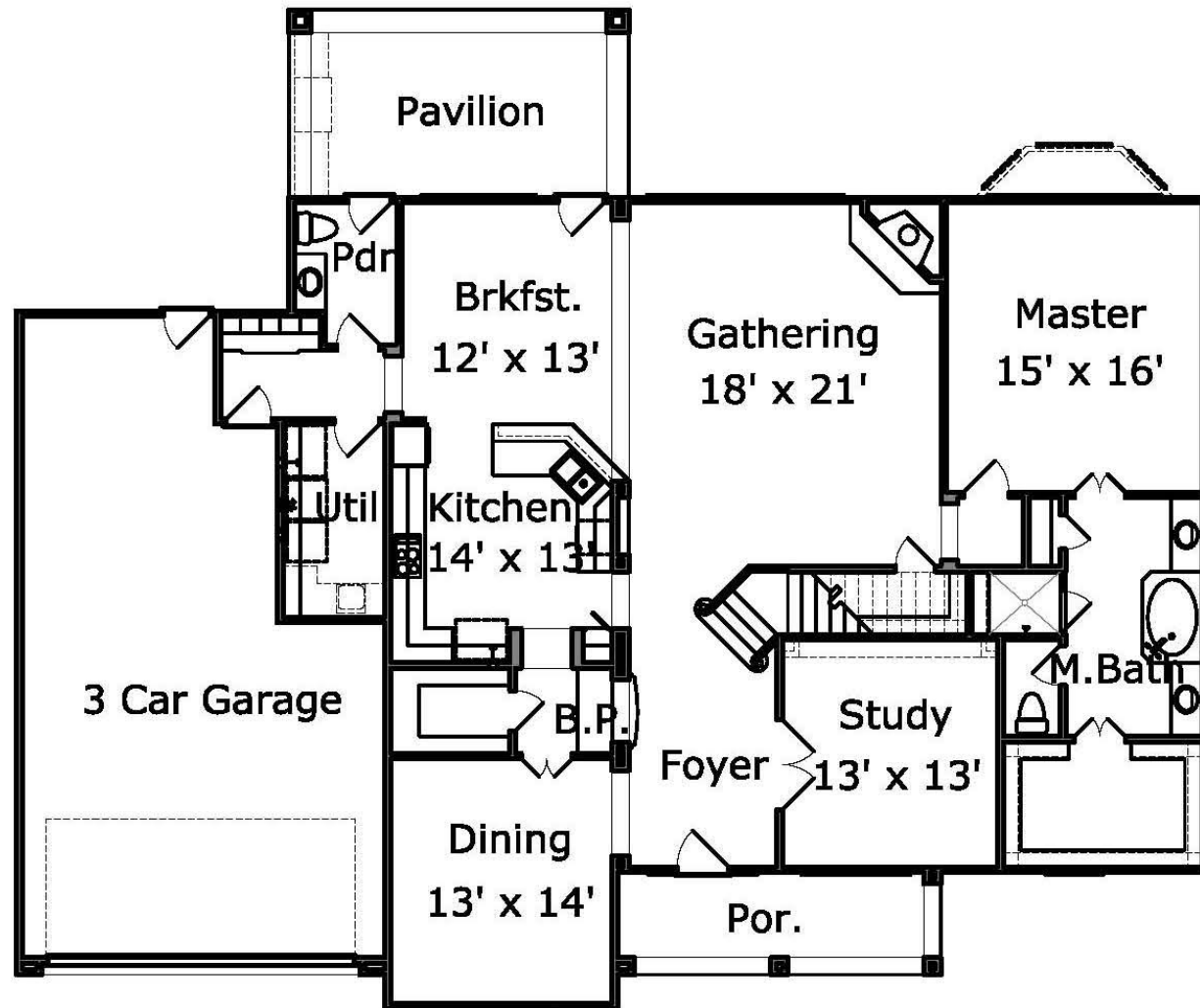
Contact Pam McVaugh  
[pam@mcvaugh.com](mailto:pam@mcvaugh.com)  
(713) 818-6567



2011 Merra Homes

# The Sago

Base Plan Total Living Area  
3,790 Sq. Ft.



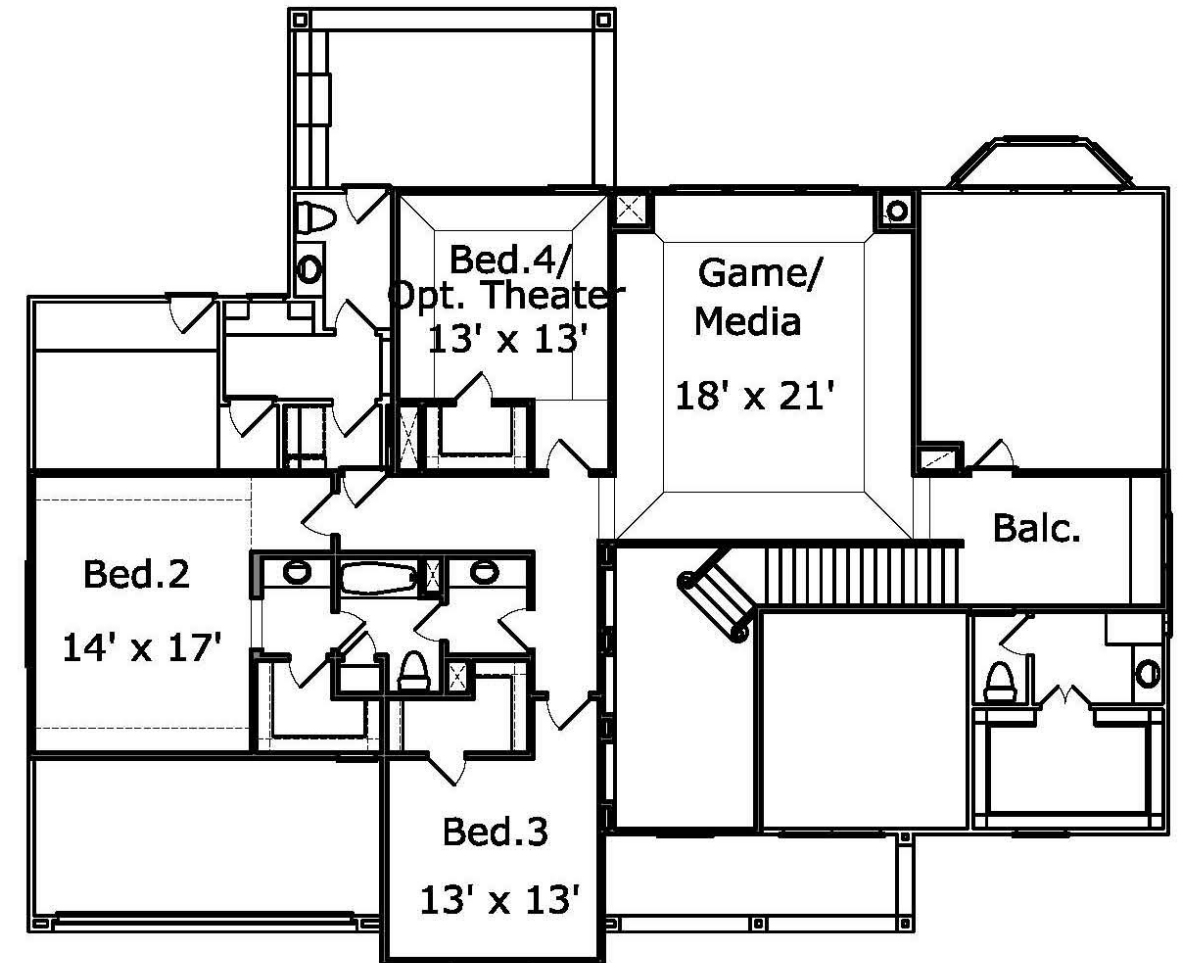
Office (713) 600-3550  
[www.mcvaugh.com](http://www.mcvaugh.com)

Merra Homes reserves the right to change floor plans, exteriors, specifications, prices, and terms at any time. All floor plans and renderings are artist's conception and are not intended to be an exact representation. Square footage, finishes and dimensions shown are approximate. Architectural styles and design may vary dramatically between elevations. Consult your sales executive for additional information.

2011 Merra Homes

# The Sago

Base Plan Total Living Area  
3,790 Sq. Ft.



Office (713) 600-3550  
[www.mcvaugh.com](http://www.mcvaugh.com)

Merra Homes reserves the right to change floor plans, exteriors, specifications, prices, and terms at any time. All floor plans and renderings are artist's conception and are not intended to be an exact representation. Square footage, finishes and dimensions shown are approximate. Architectural styles and design may vary dramatically between elevations. Consult your sales executive for additional information.



2011 Merra Homes